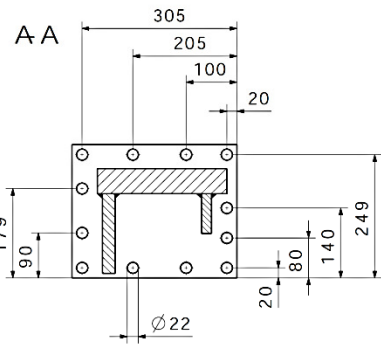
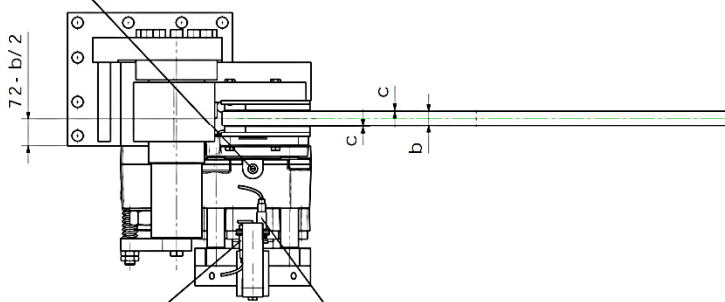


bleeding plug sample for mounting on console



option proximity switches:
indication "brake released"

option proximity switches:
indication "pad wear"

clamping force F_A	SHI 201 FC	SHI 202 FC
F_A at $c = 0,5$ mm	170 kN	240 kN
F_A at $c = 1$ mm	160 kN	220 kN
F_A at $c = 1,5$ mm	150 kN	200 kN
F_A at $c = 2$ mm	140 kN	180 kN

When ordering please advise:
right hand version, as shown
left hand version, mirror inverted

Torque calculation
SHI 201 FC, SHI 202 FC
 $M_{Br \max.} = 2 \times F_A \times 0,4 \times (d/2 - 60)$

Sample calculation
SHI 202 FC disc- $\phi = 1500$ mm $c = 1$ mm
 $M_{Br \max.} = 2 \times 220 \text{ kN} \times 0,4 \times (750 - 60) = 121440 \text{ Nm}$

- $b =$ brake disc width, min.: 20 mm
- $d =$ brake disc diameter in mm
- $d1 =$ hub or drum diameter, max.: $d-360$ mm
- $c =$ clearence adjustable from 1 - 2 mm
- lining surface: 490 cm²