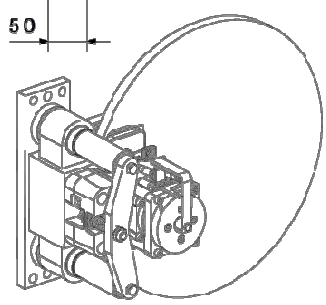
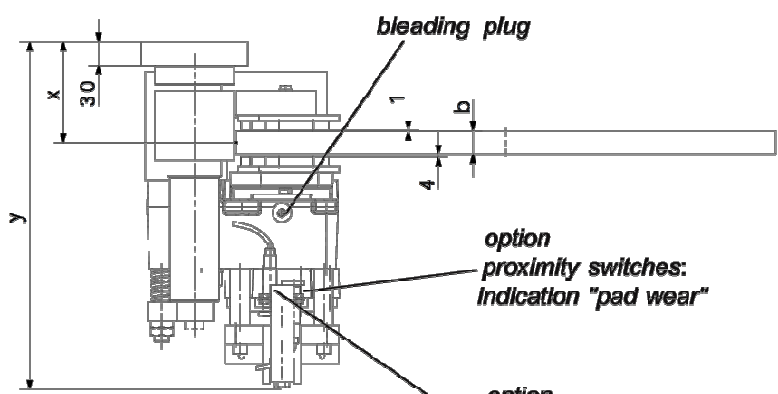
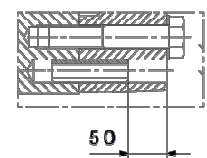


Schnitt A-A



**Torque calculation**  
 SHI 101Fc - SHI 107 Fc  
 $M_{Br max.} = 2 \times F_A \times 0.4 \times (d/2 - 60)$

**Sample calculation**  
 SHI 102 disc-Ø = 1500 mm C = 1mm  
 $M_{Br max.} = 2 \times 43.7 \times 0.4 \times (750 - 60) = 24122 \text{ Nm}$

clamping force $F_A$	SHI 101 Fc	SHI 102 Fc	SHI 103 Fc	SHI 104 Fc	SHI 105 Fc	SHI 106 Fc	SHI 107 Fc
F bei C = 0,5 mm	29,0 kN	45,1 kN	55,4 kN	74,1 kN	83,2 kN	110,0 kN	140,0 kN
F bei C = 1,0 mm	28,0 kN	43,7 kN	52,2 kN	68,7 kN	77,0 kN	98,0 kN	115,0 kN
F bei C = 1,5 mm	27,0 kN	41,3 kN	48,8 kN	62,7 kN	74,4 kN	88,0 kN	94,0 kN
F bei C = 2,0 mm	26,0 kN	40,3 kN	44,8 kN	58,7 kN	69,3 kN	73,0 kN	67,0 kN

type	requested mounting bolts, strength and torque	release pressure	weights
SHI 101Fc - 103Fc	3xM30, 8.8, 1450 Nm, µ=0,14	35-60 bar	180 kg
SHI 104Fc - 105Fc	3xM30, 12.9, 2400 Nm, µ=0,14	80 -95 bar	180 kg
SHI 106Fc - 107Fc	3xM30, 12.9, 2400 Nm, µ=0,14 2 x dowel pin Ø30 x 100 DIN 1481 heavy style	145-175 bar	180 kg

b = brake disc width, min.: 20 mm  
 d = brake disc diameter in mm  
 d1 = hub or drum diam., max.: d - 280mm  
 c = clearance adjustable from 0,5 - 2 mm  
 x = position of disc = 115 + b/2  
 y = mounting height = 440 + b  
 Sinterbelag / sinter lining :  
 Belagfläche / lining surface : 285 cm<sup>2</sup> ab Ø 560 mm