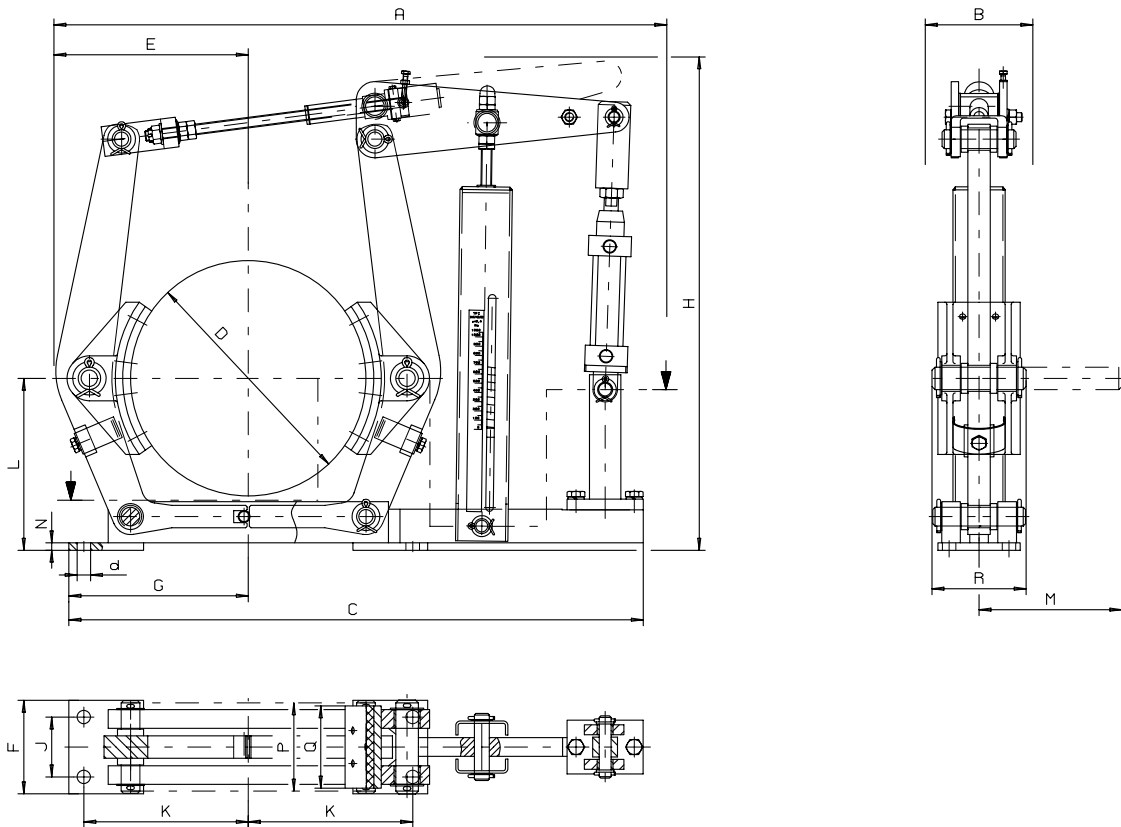


M 900 16 00 E-DE-EN

Seite / page 1/1
02.2003

Trommelbremse / Drum Brake TPi

nach / per DIN 15435
mit externer Bremsfeder und Pneumatik-Zylinder
with external spring and pneumatic - cylinder



Bei Bestellung bitte angeben:
- Bremsentyp und Pneumatikzylinder Größe
z. B. TPi200/25/60
- mit oder ohne Verschleißnachstellung
- Zubehör

When ordering please advice:
- brake type and pneumatic cylinder size
TPi200/25/60
- with or without wear compensation
- optional features

Erforderlicher Druck: 6 bar
Required pressure: 6 bar

| Bremsentyp Brake type | Pneumatik- Zylinder | Mbr. (Nm) torque $\mu = 0,4$ | A | B | C | D | E | F | G | H | J | K | L | M | N | P | Q | R | d | * kg |
|--------------------------|------------------------|------------------------------------|------|-----|------|-----|-----|-----|-----|------|-----|-----|-----|-----|----|-----|-----|-----|----|------|
| TPi 200 | Ø 25/50 | 50 - 300 | 535 | 95 | 515 | 200 | 170 | 90 | 160 | 475 | 55 | 145 | 160 | 115 | 10 | 75 | 70 | 96 | 14 | 19 |
| | Ø 32/50 | 85 - 400 | 540 | 95 | | | | | | 475 | | | | | | | | | | |
| TPi 250 | Ø 25/50 | 40 - 325 | 660 | 110 | 625 | 250 | 210 | 110 | 200 | 550 | 65 | 180 | 190 | 133 | 10 | 95 | 90 | 113 | 18 | 30 |
| | Ø 32/50 | 40 - 450 | 660 | 110 | | | | | | 550 | | | | | | | | | | |
| | Ø 40/80 | 100 - 850 | 665 | 110 | | | | | | 560 | | | | | | | | | | |
| TPi 315 | Ø 25/50 | 70 - 420 | 780 | 130 | 735 | 315 | 260 | 125 | 240 | 650 | 80 | 220 | 230 | 160 | 10 | 118 | 110 | 135 | 18 | 50 |
| | Ø 32/50 | 70 - 550 | 780 | 130 | | | | | | 650 | | | | | | | | | | |
| | Ø 40/80 | 75 - 1050 | 785 | 130 | | | | | | 660 | | | | | | | | | | |
| | Ø 50/80 | 90 - 1700 | 790 | 130 | | | | | | 660 | | | | | | | | | | |
| TPi 400 | Ø 32/50 | 80 - 575 | 935 | 160 | 900 | 400 | 310 | 160 | 300 | 765 | 100 | 270 | 280 | 199 | 12 | 150 | 140 | 167 | 22 | 85 |
| | Ø 40/80 | 100 - 1100 | 940 | 160 | | | | | | 775 | | | | | | | | | | |
| | Ø 50/80 | 100 - 1800 | 945 | 160 | | | | | | 775 | | | | | | | | | | |
| | Ø 63/80 | 125 - 2750 | 955 | 160 | | | | | | 775 | | | | | | | | | | |
| TPi 500 | Ø 40/80 | 200 - 1400 | 1090 | 200 | 1025 | 500 | 385 | 190 | 355 | 870 | 130 | 325 | 340 | 242 | 13 | 190 | 180 | 202 | 22 | 130 |
| | Ø 50/80 | 200 - 2200 | 1095 | 200 | | | | | | 870 | | | | | | | | | | |
| | Ø 63/80 | 200 - 3400 | 1100 | 200 | | | | | | 870 | | | | | | | | | | |
| | Ø 80/80 | 200 - 5400 | 1110 | 200 | | | | | | 870 | | | | | | | | | | |
| TPi 630 | Ø 63/80 | 500 - 3300 | 1245 | 240 | 1190 | 630 | 465 | 250 | 440 | 1000 | 170 | 400 | 420 | 295 | 15 | 236 | 225 | 244 | 27 | 206 |
| | Ø 80/80 | 500 - 5500 | 1250 | 240 | | | | | | 1000 | | | | | | | | | | |
| | Ø 100/80 | 500 - 8200 | 1260 | 240 | | | | | | 1000 | | | | | | | | | | |
| TPi 710 | Ø 63/80 | 500 - 3800 | 1385 | 260 | 1302 | 710 | 525 | 270 | 490 | 1100 | 190 | 450 | 470 | 332 | 15 | 265 | 255 | 276 | 27 | 268 |
| | Ø 80/80 | 500 - 6300 | 1390 | 260 | | | | | | 1100 | | | | | | | | | | |
| | Ø 100/80 | 500 - 9400 | 1400 | 260 | | | | | | 1100 | | | | | | | | | | |

* Gewicht ohne Lüftgerät
Weight without thruster

In der Massblattdarstellung ist die Verschleißnachstellung,
jedoch kein weiteres Zubehör enthalten.
Eventuelle Maßabweichungen sind zu berücksichtigen.
The data sheet includes the wear compensation but no more
accessories. Possible dimensional discrepancies are to be considered.

Siegerland Bremsen
Auf der Stücke 1 - 5
35 708 HAIGER
GERMANY

Fon: +49 (0)27 73 / 9400-0
Fax: +49 (0)27 73 / 9400-10
e-mail: info@sibre.de
internet: http://www.sibre.de

Konstruktionsänderungen vorbehalten! / Alterations reserved!